

PEXGOL PIPES

MATERIAL

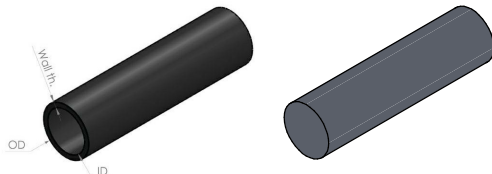
- Body: Cross Linked Polyethylene [Pe-Xa]

SPECIFICATIONS

- Temperature rating: -50°C / -58°F to 110°C / 230°F

APPROVALS

- To view complete certification list, please visit our website.



① Pipe - Class 10, 12, 15, 19, 24, 30



Pexgol is the flagship product of Golan, specializing in cross-linked polyethylene (PE-Xa) pipes. These pipes are renowned for their durability, chemical resistance, and ability to withstand a wide range of temperatures and pressures. Pexgol pipes are used in industries such as mining, oil and gas, industrial applications, aquaculture, and district heating. Thanks to their unique molecular structure, Pexgol pipes offer superior resistance to corrosion, UV exposure, and abrasion, providing a cost-effective and reliable alternative to traditional piping materials like steel and HDPE.

Golan, is a leading provider of innovative piping solutions, focused on delivering products that reduce operational and maintenance costs while improving efficiency across various applications.

www.pexgol.com

PEXGOL PIPES

Pexgol Pipe Class 10 (SDR 16.2-57.6) Working pressures: 10 bar at 20°C, 6 bar for natural gas | Initial ring stiffness 23 KN/m²

Catalogue Number	Outside Diameter (mm)	Wall Thickness (mm)	Inside Diameter (mm)	Weight (kg/m)
PA-632.08K	40	3.9	32.2	0.72
PA-754.76K	75	4.7	65.6	1.03
PA-905.68K	90	5.6	78.8	1.47
PA-1106.06K	110	6.6	96.4	2.18
PA-1257.76K	125	7.7	109.6	2.81
PA-1401.76K	140	8.7	122.6	3.55
PA-1609.06K	160	9.9	140.2	4.82
PA-1811.18K	180	11.1	157.9	6.20
PA-2012.48K	200	12.4	175.2	7.73
PA-2213.18K	225	13.9	197.2	9.12
PA-2415.18K	250	15.5	219	11.30
PA-2617.38K	280	17.3	245.4	14.12
PA-2819.18K	315	19.6	276	19.2
PA-3021.06K	355	21.9	311.2	22.67
PA-3202.76K	400	24.7	350.6	28.81
PA-3407.06K	450	27.8	394.4	38.48
PA-3603.06K	500	30.9	438.2	49.08
PA-3804.48K**	560	34.4	491.6	62.6
PA-4008.06K	630	38.9	552.2	71.30
PA-7102.08K**	710	42.8	624.4	92.75

Pexgol Pipe Class 12 (SDR 13.6-56.3) Working pressures: 12 bar at 20°C, 7.5 bar for natural gas | Initial ring stiffness 40 KN/m²

Catalogue Number	Outside Diameter (mm)	Wall Thickness (mm)	Inside Diameter (mm)	Weight (kg/m)
PA-634.76K	60	4.7	50.6	0.88
PA-755.06K	75	5.6	63.8	1.21
PA-906.76K	90	6.7	76.6	1.73
PA-1108.16K	110	8.1	92.8	2.57
PA-1259.26K	125	9.2	106.6	3.31
PA-1401.26K	140	10.3	119.4	4.15
PA-1601.18K	160	11.6	136.4	5.43
PA-1801.18K	180	12.9	155.4	6.8
PA-2001.76K	200	14.7	170.6	8.47
PA-2201.6K	225	16.6	191.8	10.75
PA-2401.6K	250	18.4	213.2	13.45
PA-2603.06K	280	20.8	238.8	16.62
PA-2803.06K	315	23.2	268.6	21.04
PA-3004.18K	355	26.1	302.8	26.68
PA-3202.06K	400	29.4	341.2	33.86
PA-3403.18K	450	33.1	383.8	42.99
PA-3603.76K	500	36.7	426.4	52.85
PA-3804.18K**	560	41.2	477.6	65.35
PA-4006.68K**	630	46.6	537.4	84.62
PA-7102.28K**	710	52.2	605.6	106.8

Pexgol Pipe Class 15 (SDR 11.55) Working pressures: 15 bar at 20°C, 9 bar for natural gas | Initial ring stiffness 80 KN/m²

Catalogue Number	Outside Diameter (mm)	Wall Thickness (mm)	Inside Diameter (mm)	Weight (kg/m)
PA-1028K	16	2.0	12	0.09
PA-1228K	20	2.5	15	0.11
PA-1528K	25	3.0	20.4	0.16
PA-2028K	32	3.9	26.2	0.26
PA-2528K	40	4.7	32.6	0.42
PA-3028K	50	5.6	40.8	0.63
PA-3528K	63	6.8	51.4	1.03
PA-75K	75	8.0	61.4	1.44
PA-90K	90	9.2	71.6	2.09
PA-110K	110	10.9	89	3.11
PA-125K	125	11.4	102.2	4.03
PA-140K	140	12.7	114.6	5.02
PA-160K	160	14.6	130.8	6.40
PA-180K	180	16.4	147.2	8.34
PA-200K	200	18.1	163.8	10.33
PA-220K	225	20.4	184.2	12.97
PA-240K	250	22.7	204.6	16.36
PA-260K	280	25.4	229.2	20.10
PA-280K	315	28.6	257.4	25.46
PA-300K	355	32.2	290.4	32.30
PA-320K	400	36.3	327.4	41.5
PA-340K	450	40.9	368.2	52
PA-360K	500	46.4	407.2	65
PA-380K	560	52.9	454.4	82
PA-400K	630	57.3	515.6	103
PA-710K	710	64.5	581	125.50

Pexgol Pipe Class 20 (SDR 9.54) Working pressures: 20 bar at 20°C, 11.5 bar for natural gas | Initial ring stiffness 150 KN/m²

Catalogue Number	Outside Diameter (mm)	Wall Thickness (mm)	Inside Diameter (mm)	Weight (kg/m)
PA-122K	12	2.0	8	0.06
PA-162.28K	16	2.2	11.6	0.09
PA-202.28K	20	2.6	14.4	0.13
PA-252.28K	25	3.5	18	0.23
PA-302.28K	30	4.4	21.2	0.36
PA-352.28K	40	5.5	29	0.59
PA-402.28K	50	6.9	38.2	0.92
PA-452.28K	60	8.6	45.8	1.45
PA-502.28K	75	10.9	54.4	2.07
PA-552.28K	90	12.9	65.4	2.97
PA-602.28K	110	15.1	79.8	4.45
PA-652.28K	125	17.7	92.6	6.13
PA-702.28K	140	19.2	101.6	7.21
PA-752.28K	160	21.9	116.2	9.40
PA-802.28K	180	24.6	130.4	11.88
PA-852.28K	200	27.3	145.2	14.65
PA-902.28K	225	30.6	164.4	18.89
PA-952.28K	250	34.2	181.6	23
PA-1002.28K	280	38.3	203.4	29
PA-1102.28K	315	43.1	228.9	37
PA-1202.28K	355	48.5	258	47
PA-1302.28K	400	54.7	290.6	59
PA-1402.28K	450	61.9	327	75
PA-1502.28K	500	69.3	360.7	93
PA-1602.28K	560	76.7	406.5	117
PA-1702.28K	630	85.3	457	148
PA-1802.28K	710	97.3	515	185.4

Pexgol Pipe Class 30 (SDR 6.52) Working pressures: 30 bar at 20°C, 19 bar for natural gas | Initial ring stiffness 440 KN/m²

Catalogue Number	Outside Diameter (mm)	Wall Thickness (mm)	Inside Diameter (mm)	Weight (kg/m)
PA-210.08K	25	3.9	17.2	0.26
PA-260.08K	32	4.7	22.6	0.42
PA-310.08K	40	5.6	28.8	0.63
PA-360.08K	50	6.7	36.6	0.92
PA-410.08K	60	8.1	45.8	1.45
PA-460.08K	75	9.2	55.6	2.07
PA-510.08K	90	10.9	66.2	2.97
PA-560.08K	110	13.1	80.8	4.45
PA-610.08K	125	15.7	93.6	6.13
PA-660.08K	140	18.2	105.6	7.21
PA-710.08K	160	21.9	116.2	9.40
PA-760.08K	180	24.6	130.4	11.88
PA-810.08K	200	27.3	145.2	14.65
PA-860.08K	225	30.6	164.4	18.89
PA-910.08K	250	34.2	181.6	23
PA-960.08K	280	38.3	203.4	29
PA-1010.08K	315	43.1	228.9	37
PA-1060.08K	355	48.5	258	47
PA-1110.08K	400	54.7	290.6	59
PA-1160.08K	450	61.9	327	75
PA-1210.08K	500	69.3	360.7	93
PA-1260.08K	560	76.7	406.5	117
PA-1310.08K	630	85.3	457	148
PA-1360.08K	710	97.3	515	185.4

To Transfer Pipe Standards from a Showcase File to Another Project:

Open both the showcase file and the target project.

In the target project, go to the Manage tab.

Select "Transfer Project Standards."

In the pop-up window, choose the showcase file as the source.

Select only the category "Piping Systems" (uncheck everything else).

Click OK to transfer the pipe standards into your target project.

Now, the pipe fittings and pipe standards are successfully transferred and ready to use in your project.

Scale